

**MAISON** DEVILLE  
L I V E R O Y A L

# WELCOME

---

Regal Avenue Limited is a general construction firm focused on offering top quality housing and construction solutions in West Africa.

Our Maison De Ville designs pay homage to the serene way of life where ambiance is an extension of the home, enabling meaningful connections to nature and self. Our home are smart, working with internet-connected devices to ensure comfort and enable remote monitoring and management of the household appliances and systems.

We guarantee and work continuously towards endless comfort for our home-owners. Even you deserve to live royal.





4

3

2

1



AVENUE

# FEATURES

---



**ALEXA**



**FIBER OPTIC**



**CCTV**



**24/7 POWER**



**CITY VIEW**



**INNER COURTYARD**



**SERENE**



**HOTSPOTS**



LET'S DO IT  
FOR YOU

## ALEXA

Stay comfortable with your personal assistant at home, ready to serve your every need. Want to turn off the lights? Lock the doors? Shop? Find the A.C. remote? Why raise your hands when you can raise your voice?



# LIVE IN THE CLOUD



# FIBER OPTIC

Because fast and consistent internet are now a necessity to the modern man's life. Live with it unconditionally - Stay connected.





WE'RE YOUR  
EYES



## CCTV

Go out and come back with peace of mind. Stay covered with security cameras indoors and outdoors so you always know what's happening. 24/7 we've got your back.



# THE LIGHTHOUSE



## 24/7 POWER

Live independent of the national grid with power guaranteed day and night. Go about your daily activities with even more assurance that there'll always be light when you get back home.



# THE HEIGHT OF LUXURY



## CITY VIEW

Views from the top are always the best. Now enjoy the best views of your city from the never-ending comfort of your home.



# LIVE GREEN



## INNER COURTYARD

Enjoy even more open space within your walls with courtyards designed to maximize lighting and air flow within the house. Live royal, live modern, live green.



QUIET  
TIME



## SERENE

Enjoy peace and quiet in your own mini city.  
Get away from the violent and noisy streets,  
and live in true comfort and luxury.



# CLOSE ENOUGH

## HOTSPOTS

Live away from the action, but enjoy close proximity to

- **Wuse:** 2-minutes' drive
- **Reagent School:** 1 minute drive
- **Capital Hub Plaza:** 1 minute walk
- **IBB Boulevard Maitama:** 2-minutes' drive



**REGAL AVENUE**



1

2

3

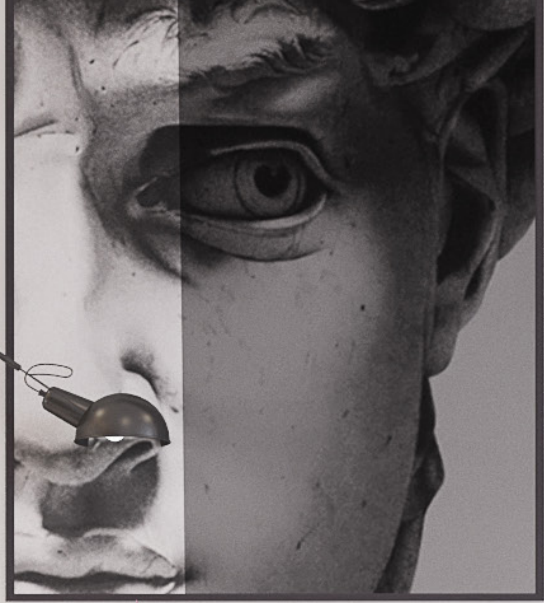
4

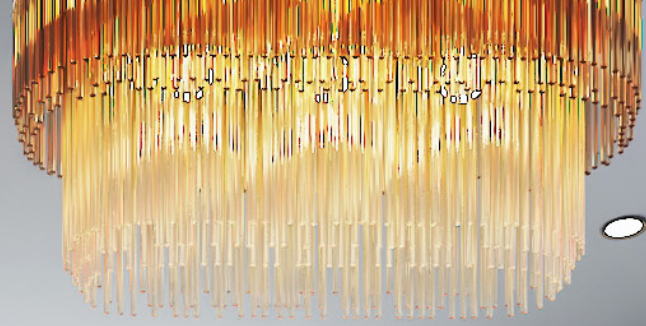














YENDIS





# FLOOR PLAN

---

Floor plans for Maison De Ville are listed below. The floor plan details include property type, size by square foot, living room, dining area, kitchen, and number of bedrooms. Please, feel free to [contact us](#) for more details.







**Ground Floor**




**First Floor**



Second Floor

# CONTACT US

---

   [regalavenueafrica](#)



If you have any questions about Maison De Ville our Customer Service team is here for you. Simply fill in the form below:

First Name\*

Last Name\*

Telephone\*

Your E-mail\*





**MAISON** DE VILLE  
L I V E R O Y A L

 **REGAL AVENUE**  
Investment and value adding real estate solutions